



GODZILLA WALKTHROUGH






GOJIRA-KUN (A.K.A. GODZILLA)

GAME SOLUTION POWERED BY









HERE, WE WILL TRY TO PROVIDE YOU WITH A COMPLETE WALKTROUGH OF GOJIRA-KUN (A.K.A. GODZILLA), WITH A BRIEF DESCRIPTION OF THE ITEMS AND ENEMIES YOU WILL FIND DURING OUR AMAZING JOURNEY. THE GAME FEATURES 49 SCREENS, BUT WE NEED TO SOLVE ONLY 29 OF THEM.

I - ITEMS

-  HOUR-GLASS - FREEZES THE ENEMIES IN THE SCREEN
-  BOMB - KILLS ALL ENEMIES IN THE SCREEN
-  KEY - MAKES THE ARROWS TO ACCESS NEXT SCREEN APPEAR WITHOUT SMASHING ALL ROCKS
-  HEART - EXTRA LIFE
-  FIRE BALL - THROW FIRE BALLS INSTEAD OF PUNCHING

II - ENEMIES

-  HYDRA - INDESTRUCTIBLE. IT APPEARS WHEN YOU LAST TOO MUCH TIME ON ONE SCREEN.
-  BLUE DINOSAUR - CANNOT BE KILLED. PUNCH HIM TO TEAR HIM AWAY. KILL IT USING THE BOMB, A ROCK OR THROWING IT IN THE WATER.
-  TAN DINOSAUR - IT RUNS QUICKLY AFTER YOU. KILL HIM BY PUNCHING IT.
-  YELLOW DINOSAUR - IT PUNCHES YOU. KILL HIM BEFORE IT HITS YOU.
-  RED DINOSAUR - IT FLIES AFTER YOU. IT USUALLY COMES FROM BELOW.
-  GRAY DINOSAUR - IT PUNCHES YOU. KILL HIM BEFORE IT HITS YOU.

III - CHEATS

IF YOU ARE USING A FILE VERSION OF GODZILLA (.DSK), TRY THIS POKE FOR 99 LIVES OR START AT THE LAST SCREEN TO SEE THE GAME ENDING.

```
10 BLOAD"GODZILLA.001"
20 'POKE&HA4B4,&H21:POKE&HA4B5,&H80:POKE&HA4B6,&HB7:'LAST SCREEN
30 POKE&HB78B,99:'99 LIVES
40 DEFUSR=&HD000:A=USR(0)
50 BLOAD"GODZILLA.002":OUT&HD4,0:DEFUSR=&HD000:PRINTUSR(0)
```

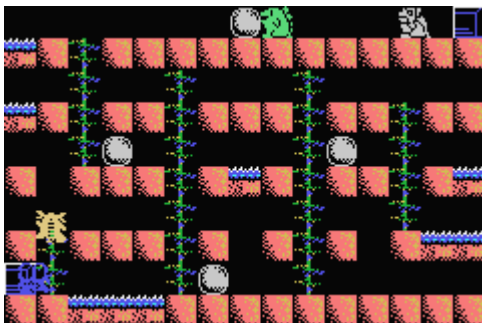
IF YOU ARE USING A .ROM FILE, WE ADVISE THAT YOU USE BLUEMSX TO RUN THE GAME. A CHEAT IS AVAILABLE FOR YOU TO PLAY USING 255 LIVES AND INFINITE ENERGY. HERE IS THE CHEAT (THIS CHEAT IS ALSO AVAILABLE WITH THE LAST VERSION OF BLUEMSX - FOLDER ..\TOOLS\CHEATS):

```
!CHEATS FOR BLUEMSX :GODZILLA
!(C) 2005 ALBERT BEEVENDORP AND (C) 2005 PATRICK VAN ARKEL
0,58127,101,0,LIVES
0,58166,255,0,ENERGY
```

IV - SOLUTION

SO LET'S START OUR QUEST FOR MINIRA. BELOW, WE WILL PROVIDE THE SOLUTION TO EVERY NEEDED SCREEN OF THE GAME, PROVIDING THE BEST WAY TO ACHIEVE YOUR GOAL. ALTERNATE SCREENS THAT YOU MAY ENTER ARE NOT SOLVED IN THIS WALKTROUGH. MAYBE A FUTURE VERSION WILL ENCOMPASS THESE SCREENS. WE DEEPLY ADVISE THAT THIS WALKTHROUGH BE USED WITH THE RESPECTIVE MAP WHICH YOU MAY FIND AT MSX SOLUTIONS - [HTTP://MSXSOLUTIONS.MSXBLUE.COM](http://MSXSOLUTIONS.MSXBLUE.COM)

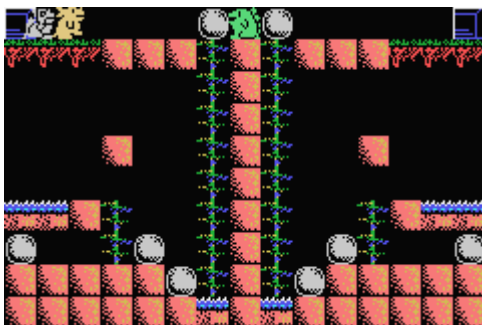
JANUS



JANUS IS THE START SCREEN OF OUR QUEST. HERE WE WILL FIND 4 ROCKS TO BE SMASHED IN ORDER TO ADVANCE TO THE NEXT SCREEN. JUST PUNCH THE ROCK AT YOUR LEFT UNTIL IT HITS THE WATER, AT THE LEFT SIDE OF THE SCREEN, AND FINALLY SMASH IT. NOW GO DOWN TO THE FLOOR WITH TWO ROCKS AND HIT THE ROCK ON THE LEFT, FROM THE LEFT TO THE RIGHT, UNTIL IT HITS THE WATER AND THEN SMASH IT. NOW, GO UP, SO AS TO BYPASS THE WATER, AND GO DOWN AGAIN AND HIT THE ROCK ON THE RIGHT UNTIL IT HITS THE WATER AT THE RIGHT SIDE OF THE

SCREEN AND SMASH IT. NOW, LET'S GO FOR THE LAST ROCK WHICH IS LOCATED IN THE LOWER PORTION OF THE SCREEN. THIS ROCK RIDES AN HOUR-GLASS. PUNCH THE ROCK TO THE LEFT UNTIL IT HITS THE WATER. THEN SMASH IT AND PUNCH THE HOUR-GLASS. TIME WILL STOP. NOW, GO UP AND ENTER THE ARROW →, AND GO TO **THANKS**. IF YOU ENTER THE ARROW ↓, YOU WILL GO TO **ZONE**.

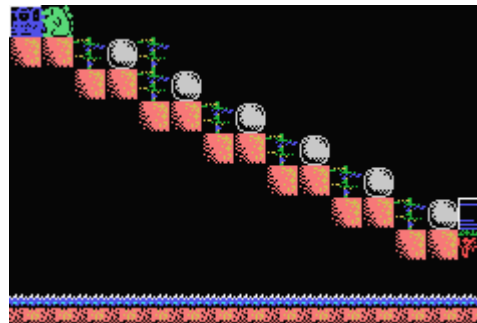
THANKS



HERE WE WILL HAVE TO BE QUICK AND LUCKY. PUNCH THE LEFT ROCK TO THE LEFT AND RIGHT ONE TO THE RIGHT UNTIL THEY DROP DOWN THROUGH THE MUDDY FLOOR. YOU WILL HAVE TO GO DOWN BY THE LEFT OR BY THE RIGHT. FIRST GO DOWN BY THE LEFT ROPE TO THE FLOOR WHERE THERE ARE TWO ROCKS. PUNCH THE RIGHT ROCK UNTIL IT HITS THE LEFT ROCK. SMASH BOTH ROCKS. NOW, GO UP AND DOWN BY THE RIGHT ROPE TO THE FLOOR WITH THE TWO ROCKS, AS BEFORE. PUNCH THE LEFT ROCK UNTIL IT HITS THE RIGHT ROCK AND SMASH BOTH OF THEM. NOW

YOU HAVE FOUR ROCKS IN THE SCREEN. GO UP AGAIN AND DOWN BY THE LEFT ROPE. GO UP THROUGH THE LITTLE ROPE AND PUNCH THE ROCK TO THE LEFT UNTIL IT HITS THE WATER AND SMASH IT. YOU WILL FIND A HEART. PUNCH IT AND YOU WILL GET AN EXTRA LIFE. NOW GO TO THE BIG ROPE AND GO DOWN BUT TAKE CARE NOT TO FALL DOWN INTO THE WATER. FROM THE ROPE, PUNCH THE ROCK AND QUICKLY GO UP AND DOWN BY THE RIGHT ROPE. HERE YOU WILL HAVE TO DO THE SAME AS BEFORE - PUNCH THE UPPER ROCK TO THE RIGHT UNTIL IT HITS THE WATER AND GO TO THE BIG ROPE AND GO DOWN. TAKE CARE AGAIN NOT TO FALL INTO THE WATER AND PUNCH THE ROCK. ENTER THE ARROW →, JUST BESIDE YOU, AND YOU WILL GO TO **LUNLUN**. IN CASE SOMETHING WENT WRONG AND YOU ENTERED THE ARROW ↓, YOU WILL BE DIRECTED TO **PIT**.

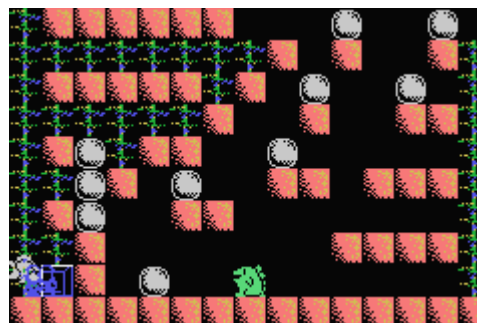
LUNLUN



GO QUICKLY TO THE RIGHT, IN ORDER TO AVOID ANY ENEMY COMING FROM THE ENEMY PATH OF THE LEFT SIDE OF THE SCREEN. BYPASS THE FIRST ROCK. THIS ROCK WILL BE THE LAST TO BE SMASHED. PUNCH THE SECOND ROCK TO THE RIGHT UNTIL IT FALLS BEHIND THE THIRD ROCK AND SMASH THE THIRD ROCK. NOW KEEP PUNCHING THE SECOND ROCK UNTIL IT FALLS BEHIND THE FOURTH ROCK AND SMASH THE SECOND ROCK UNTIL IT FALLS BEHIND THE FIFTH ROCK. AND, AS BEFORE, SMASH THE FIFTH ROCK. KEEP

PUNCHING THE SECOND ROCK TO THE RIGHT AND SMASH IT. GO DOWN THE LITTLE ROPE AND SMASH THE SIXTH ROCK WHICH IS SEALING THE SECOND ENEMY PATH. GO UP QUICKLY TOWARDS THE FIRST ROCK THAT WE LEFT IN THE BEGINNING. SMASH IT AND A BOMB WILL APPEAR. SMASH IT. ALL ENEMIES IN THE SCREEN WILL BE DESTROYED. NOW ENTER THE UNIQUE ARROW → OF THE SCREEN AND GO TO **DOMINO**.

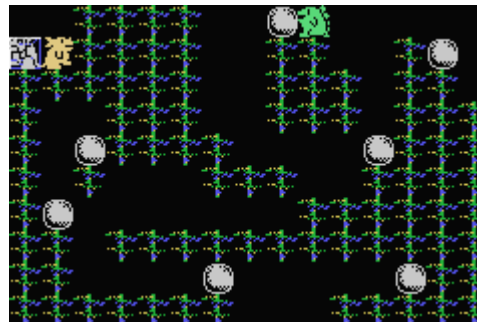
DOMINO



GO TO YOUR RIGHT AND UP TO THE UPPER FLOOR, PUNCH THE ROCK IN YOUR LEFT. WALK OVER IT A LITTLE BIT MORE, JUST TO PUNCH THE OTHER ROCK IN YOUR LEFT, WITHOUT FALLING. NOW, LET'S GO BACK TO A FLOOR BELOW WHERE YOU ARE. PUNCH THE TWO ROCKS AND WALK OVER THE ROCKS A LITTLE BIT MORE, AS BEFORE, JUST TO PUNCH THE OTHER TWO ROCKS ON YOUR LEFT. GO BACK TO A FLOOR BELOW WHERE YOU ARE. PUNCH THE TWO ROCKS OF YOUR LEFT AND WALK OVER THEM. PUNCH THE THREE ROCKS OF THE LEFT. WALK OVER THEM TO THE

LEFT AND PUNCH THE NEXT ROCK TO THE LEFT. NOW, JUMP DOWN TO THE ROCK YOU HAVE JUST PUNCHED AND WALK A LITTLE BIT TO THE LEFT JUST TO SMASH THE THREE ROCKS OF THE LEFT. THE LAST ROCK OF THE THREE RIDES A BOMB. SMASH IT AND DESTROY ALL ENEMIES. NOW GO BACK AND SMASH THE REMAINING ROCKS. WE WILL HAVE TO THE ARROW →, SO AS TO GAIN ACCESS TO **STOPPER**. IN CASE YOU ENTER THE ARROW ↓, YOU WILL BE SENT TO **INSHALLAH**.

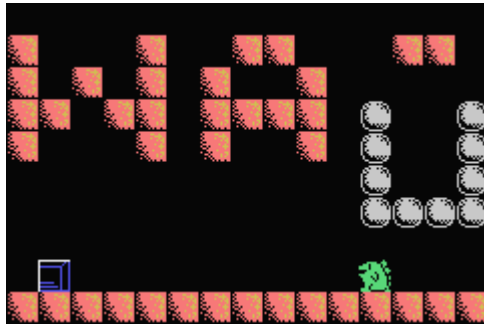
STOPPER



LET'S START PUNCHING THE ROCK CLOSE TO YOU TO THE LEFT. NOW GO TO YOUR RIGHT AND PUNCH THE ROCK OF UPPER RIGHT PORTION OF THE SCREEN TO THE RIGHT AND SMASH IT. GO TO THE LEFT, OVER THE ROW OF THREE ROCKS THAT WAS FORMED. GO TO THE FAR LEFT ROCK AND PUNCH IT FROM THE RIGHT TO THE LEFT. GO BACK TO THE RIGHT AND PUNCH THE MIDDLE ROCK FROM THE RIGHT TO THE LEFT. KEEP GOING TO THE RIGHT AND PUNCH THE RIGHT ROCK, FROM THE RIGHT TO

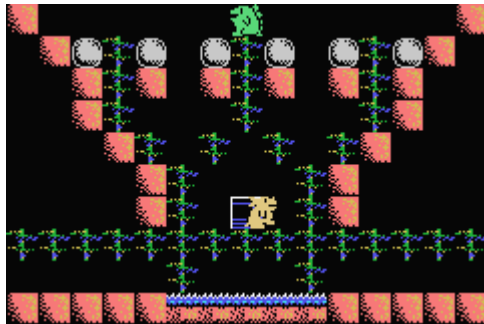
THE LEFT UNTIL IT FALLS TWO FLOORS BELOW WHERE IT WAS BEFORE. GO TO THE LEFT AND PUNCH THE UPPER ROCK OF THE TWO ROCKS QUEUE TO THE LEFT AND SMASH IT. NOW PUNCH THE LOWER ROCK TO THE RIGHT. WALK TO THE RIGHT AND START PUNCHING THE ROCK OF YOUR RIGHT TO THE RIGHT UNTIL IT HITS THE SECOND ROCK OF YOUR RIGHT. SMASH THE FIRST ONE. IT WILL REVEAL AN HOUR-GLASS. PUNCH IT TO STOP THE ENEMIES. NOW, PUNCH THE SECOND ROCK TO THE RIGHT SIDE OF THE SCREEN AND SMASH IT. NOW WE HAVE THREE ROCKS LEFT IN A ROW. PUNCH THEM AS YOU WISH AND SMASH THEM ALL. WE WILL HAVE ONLY ONE EXIT HERE. SO, ENTER THE ARROW → AND LET'S GO TO **HELP!**

HELP!



AS YOU MAY NOTE, YOU WILL HAVE TO GO QUICKLY TO THE LEFT WHEN THE GAME STARTS IN ORDER TO NOT BE KILLED BY THE ROCKS THAT FALL FROM ABOVE. NOW, IT IS A PIECE OF CAKE. JUST SMASH ALL THE ROCKS. THE SECOND ROCK FROM THE LEFT TO THE RIGHT HIDES AN HOUR-GLASS. WHEN YOU HAVE SMASHED ALL THE ROCKS, TAKE THE ARROW → AND LET'S GO TO **GATEKEEPER**. IF YOU TAKE THE ARROW ←, YOU WILL RETURN TO **STOPPER**.

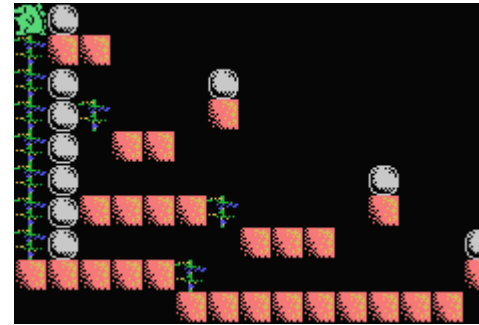
GATEKEEPER



LET'S START PUNCHING THE TWO ROCKS BESIDE YOU - THE ONE OF YOUR LEFT AND YOUR RIGHT. NOW GO TO YOUR LEFT AND GO UP BY THE ROPE OF THE LEFT SIDE. PUNCH THE ROCK OF THE RIGHT AND SMASH THE ONE OF THE LEFT. GO DOWN AND PUNCH THE UPPER ROCK OF THE TWO ROCKS QUEUE, WALK OVER IT, AND PUNCH THE LOWER ROCK FROM THE RIGHT TO THE LEFT AND SMASH IT. NOW GO TO THE RIGHT AND GO UP BY THE ROPE OF THE RIGHT SIDE, AS BEFORE. SMASH THE RIGHT ROCK AND PUNCH THE LEFT ONE. FACE THE LOWER ROCK OF THE TWO ROCKS

QUEUE AND PUNCH BOTH ROCKS. NOW, SMASH THE THREE REMAINING ROCKS AS YOU WISH, BUT TAKE CARE WITH THE ENEMIES PATH. THE ARROW ↓ WILL APPEAR JUST BELOW THE PATH. ENTER IT AND GO TO **FAR**.

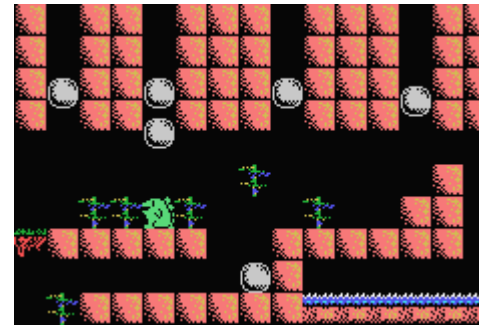
FAR



PUNCH THE UPPER ROCK TO THE RIGHT UNTIL IT FALLS DOWN. GO DOWN THE ROPE AND PUNCH THE SECOND ROCK TO THE RIGHT UNTIL IT FALLS BEHIND THE FIRST ROCK. WALK OVER THESE ROCKS AND PUNCH THE ROCK LOCATED OVER THE UPPER PLATFORM. GO BACK AND DOWN BY THE BIG ROPE. FACE THE MIDDLE ROCK OF THE FIVE ROCKS QUEUE. THEN, SMASH THE TWO OTHER ROCKS OVER IT. KEEP PUNCHING THE REMAINING ROCK UNTIL IT FALLS BEHIND THE ROCK OF THE UPPER PLATFORM. GO BACK AND JUMP OVER THE UPPER TWO ROCKS ROW. GO DOWN

THE LITTLE ROPE. NOW YOU ARE BESIDE THE LEFT ROCK OF THE ROW. SMASH IT AND PUNCH THE RIGHT ONE TO THE RIGHT UNTIL IT FALLS. GO LEFT AND DOWN AND PUNCH THE ROCK THAT JUST FELT DOWN TO THE RIGHT UNTIL IT FORMS A THREE ROCKS ROW. WALK OVER THIS ROW AND PUNCH THE ROCK LOCATED IN THE MIDDLE PLATFORM. GO ALL WAY BACK TO THE LEFT. GO ALL YOUR WAY DOWN. PUNCH THE ROCK AND SMASH THE ONE THAT FALLS. NOW KEEP PUNCHING THE ROCK UNTIL IT GETS BESIDE THE ROCK OF THE RIGHT (THE ONE THAT FELT DOWN FROM THE MIDDLE PLATFORM). GET BACK AND UP BY THE ROPE, GO RIGHT AND STAY BESIDE THE LEFT ROCK OF THE THREE ROCKS ROW. SMASH THE TWO FIRST AND PUNCH THE THIRD UNTIL IT FALLS AND GETS BESIDE THE TWO ROCKS OF THE LOWER FLOOR. WALK OVER THE THREE ROCKS ROW AND SMASH THE ROCK OF THE LOWER PLATFORM. IT HIDES AN HOUR-GLASS. PUNCH IT AND START SMASHING THE ROCKS FROM THE RIGHT TO THE LEFT. ENTER THE ARROW ← AND NOW IT IS TIME FOR **METEOR**.

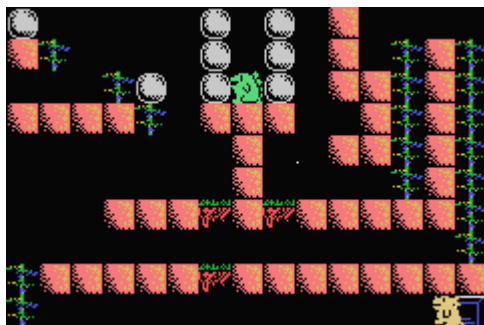
METEOR



GO QUICKLY TO THE LEFT WHEN THE GAME STARTS OR YOU WILL BE KILLED BY THE ROCKS THAT FALL FROM ABOVE. GO UP BY THE ROPE NEXT TO THE TWO ROCKS QUEUE AND PUNCH THE UPPER ONE TO THE RIGHT UNTIL IT FALLS. GO BACK AND PUNCH THE OTHER ROCK TO THE LEFT UNTIL IT FALLS ALSO. GO BACK AND PUNCH THE ROCK IN THE LEFT, FROM THE LEFT TO THE RIGHT, UNTIL IT FALLS. NOW, WALK OVER THE ROCKS AND PUNCH THE ROCK OF THE RIGHT UNTIL IT PASSES THE ROPE OF THE RIGHT. NOW GO UP THE ROPE, WALK OVER THE ROCK AND SMASH THE

ROCK WHICH IS OVER THE PLATFORM. NOW PUNCH THE ROCK TO THE LEFT UNTIL IT FALLS THROUGH THE MUDDY FLOOR. GO DOWN AND SMASH THE SQUARE OF FOUR ROCKS. NOW GET BACK AND SMASH THE LAST ROCK. TWO ARROWS WILL APPEAR. THE ARROW ↓ WILL LEAD YOU TO **BALLAST**. TAKE IT. THE ARROW ↑ WILL TAKE YOU BACK TO **HELP!**

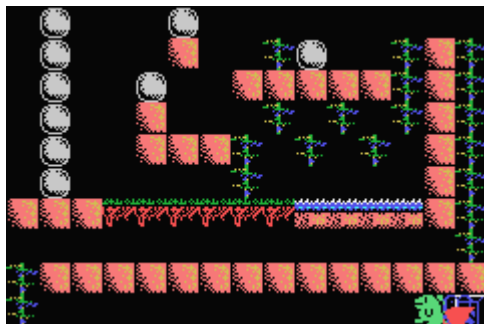
BALLAST



LET'S START BY PUNCHING THE QUEUE OF THREE ROCKS OF YOUR LEFT, WALK OVER THEM AND PUNCH TWICE THE ROCK OF YOUR LEFT. GO UP THROUGH THE LITTLE ROPE, WALK OVER THE ROCK YOU HAVE PUNCHED, USE THE OTHER LITTLE ROPE AND SMASH THE ROCK AT THE LEFT UPPER CORNER OF THE SCREEN. GO BACK AND PUNCH THE PREVIOUS ROCK UNTIL YOU SMASH IT. NOW PUNCH THE OTHER QUEUE OF THREE ROCKS. GO BACK AND DOWN THROUGH THE THIRD LITTLE ROPE. PUNCH THE THREE ROCKS OF YOUR

RIGHT. THEY WILL FALL THROUGH THE MUDDY FLOOR. GO DOWN ONE FLOOR AND WE WILL HAVE A ROCK CLOSING OUR WAY TO THE RIGHT. PUNCH AND SMASH IT. GO UP THROUGH THE BIGGER ROPE AND DOWN THROUGH THE ROPE OF THE LEFT. PUNCH THE THREE ROCKS QUEUE AND SMASH THE LAST ONE. GO BACK THROUGH THE TWO PREVIOUS ROPES. SMASH THE TWO ROCKS OF YOUR LEFT. THE SECOND ONE HIDES A BOMB. PUNCH IT AND KILL ALL ENEMIES. GO DOWN TO THE LOWER FLOOR AND SMASH THE TWO REMAINING ROCKS. ENTER THE UNIQUE ARROW →, WHICH WILL LEAD YOU TO **OVERLOAD**.

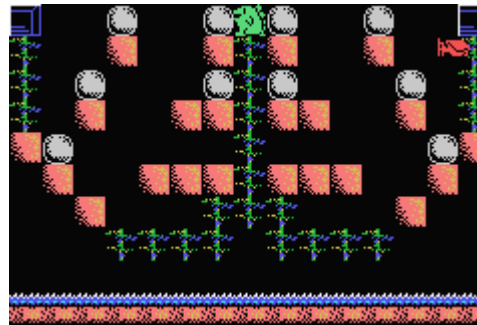
OVERLOAD



START THIS SCREEN MOVING QUICKLY TO THE LEFT, SINCE YOU ARE BESIDE AN ENEMY PATH. GO UP ONE FLOOR AND TAKE THE BIG ROPE OF THE RIGHT. NOW, PUNCH THE FIRST ROCK OF YOUR LEFT TWICE. GO UP THROUGH THE LITTLE ROPE AND PUNCH THE UPPER ROCK. IT WILL FALL OVER A THIRD ROCK. TAKE CARE SO THAT YOU DO NOT FALL HERE. GO BACK AND PUNCH AGAIN THE FIRST ROCK UNTIL IT FALLS. JUMP OVER IT AND PUNCH THE QUEUE OF TWO ROCKS OF YOUR LEFT. THEY WILL FALL THROUGH THE MUDDY FLOOR. GO TO YOUR LEFT AND PUNCH THE ROCK

TWICE AND IT WILL FALL THROUGH THE MUDDY FLOOR ALSO. GO DOWN AND THEN TO THE LEFT. SMASH THE QUEUE OF SIX ROCKS. GO BACK THROUGH THE LITTLE ROPES AND GO DOWN THROUGH THE BIG ROPE. TO YOUR LEFT, YOU WILL HAVE ONE ROCK AND THEN A QUEUE OF TWO ROCKS. SMASH THEM ALL TO FINISH THIS SCREEN. TWO ARROWS WILL APPEAR AND YOU WILL BE BETWEEN THE TWO OF THEM. THE ARROW ↓ WILL TAKE YOU TO **RAKKO** AND THE ARROW ← TO **BALLAST**. GO TO **RAKKO**.

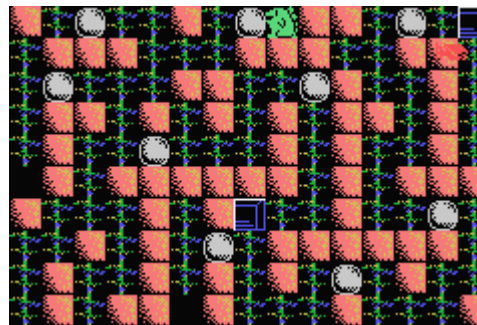
RAKKO



GO DOWN A FLOOR AND PUNCH THE TWO ROCKS BESIDE YOU JUST ONCE. THEN, GO UP BACK ONE FLOOR AND PUNCH THE TWO ROCKS BESIDE YOU, AND THEY WILL FALL JUST OVER THE TWO ROCKS YOU HAVE PUNCHED BEFORE. GO DOWN ONE FLOOR AGAIN AND PUNCH BOTH QUEUES OF TWO ROCKS. WALK OVER THEM, EACH AT A TIME OF COURSE, AND PUNCH THE OTHER QUEUE OF TWO ROCKS WHICH WILL FALL OVER THE LOWER ROCKS AND FORM A THREE ROCKS QUEUE, ONE IN THE LEFT SIDE OF THE SCREEN AND THE OTHER IN THE RIGHT SIDE. GO

DOWN ONE FLOOR AND PUNCH THE QUEUES OF TWO ROCKS. WALK OVER THEM AND SMASH THE ROCKS OF THE THREE ROCKS QUEUE. THE FIRST ROCK OF THE THREE ROCKS QUEUE OF THE RIGHT SIDE HIDES A BOMB. USE IT. NOW, IF YOU HAVE DONE ALL CORRECTLY, YOU WILL HAVE TWO OPPOSITE QUEUES OF TWO ROCKS. SMASH THEM AS YOU WISH. AN ARROW ↓ WILL APPEAR WHICH WILL LEAD YOU TO **KILLER**.

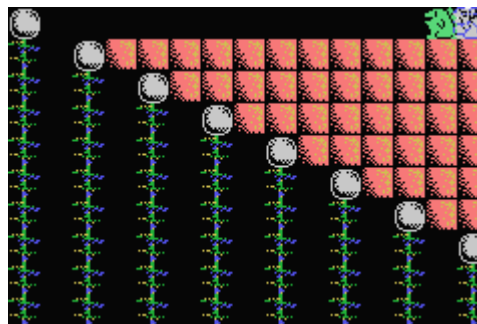
KILLER



PUNCH AND SMASH THE ROCK OF YOUR LEFT. GO ON AND PUNCH AND SMASH THE UPPER LEFT ROCK. GO DOWN AND PUNCH AND SMASH THE ROCK BELOW THE PREVIOUS ONE. GO DOWN AGAIN AND PUNCH AND SMASH THE OTHER ROCK. NOW, GO RIGHT AND UP AND SMASH THE ROCK OF YOUR RIGHT. GO DOWN, PASS THE ENEMY PATH AND THE ROCK AND GO TO YOUR RIGHT. PUNCH AND SMASH THE ROCK OF YOUR RIGHT. CONTINUE AND GO UP. PUNCH AND SMASH THE ROCK OF YOUR LEFT. KEEP GOING UP AND PUNCH AND SMASH THE ROCK OF YOUR RIGHT. NOW GO BACK

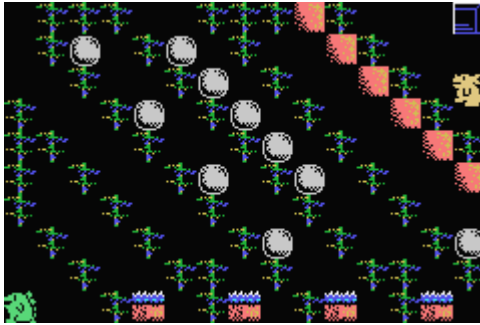
AND PUNCH AND SMASH THE REMAINING ROCK. TWO ARROWS WILL APPEAR. ARROW ↓ WILL TAKE US TO **KOALATAKUAN** AND THAT IS OUR WAY. ARROW ← TAKES YOU TO **DROP**.

KOALATAKUAN



AS THE GAME STARTS, QUICKLY RUN TO THE LEFT AND, BEFORE FALLING DOWN, SMASH THE MOST LEFT ROCK. NOW, GO UP THROUGH THE MOST LEFT ROPE AND SMASH THE ROCK OF YOUR RIGHT. FALL DOWN AGAIN AND GO UP THROUGH THE NEXT ROPE UNTIL . THE FIFTH ROCK HIDES A HEART. PUNCH IT TO INCREASE YOUR LIFE BAR. SMASH THE LAST THREE ROCKS AND LET'S GO TO THE NEXT SCREEN. TAKE THE ARROW → WHICH LEADS YOU TO **SNAKE**. IN CASE YOU TAKE THE WRONG WAY AND ENTER THE ARROW ↓, YOU WILL GO TO **EASY WIZY**.

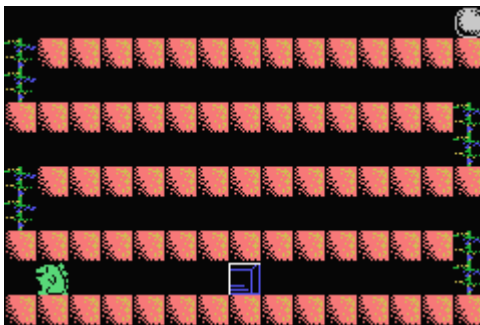
SNAKE



WALK OVER THE PIECES OF ROPES AND REACH THE RIGHT SIDE OF THE SCREEN AND SMASH THE ROCK OF YOUR RIGHT. NOW, LET'S GO UP. LET'S START BY THE TOP ROW OF ROCKS. PUNCH THE ROCK OF YOUR LEFT, FROM THE RIGHT TO THE LEFT, AND ACCESS THE SECOND ONE. PUNCH THIS ONE ALSO. GO DOWN ONE FLOOR AND YOU WILL FACE ANOTHER ROW OF TWO ROCKS. PUNCH THE FIRST ONE, ALSO FROM THE LEFT TO THE RIGHT, AND ACCESS THE SECOND ONE. PUNCH IT TWICE UNTIL IT FALLS DOWN. GO DOWN ANOTHER FLOOR AND YOU WILL HAVE A ROW OF THREE ROCKS.

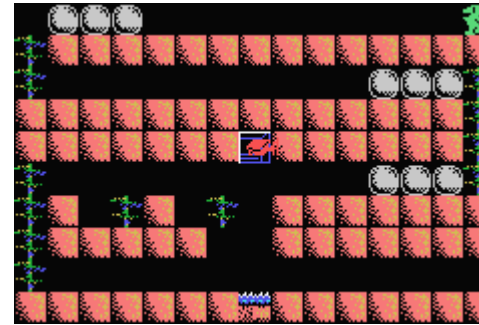
PUNCH THE TWO FIRST ROCKS AND THEY WILL FALL DOWN. THE LAST ONE WILL BE SMASHED AGAINST THE LEFT SIDE OF THE SCREEN. GO DOWN ANOTHER FLOOR. IN CASE YOU HAVE MADE THE RIGHT MOVES, NOW YOU HAVE A ROW OF FOUR ROCKS. PUNCH THE FIRST ONE, SMASH THE SECOND AND PUNCH THE OTHER TWO ROCKS UNTIL THEY FALL DOWN. GO DOWN ONE FLOOR AGAIN AND YOU HAVE A ROW OF THREE ROCKS. PUNCH THE ROCK OF YOUR LEFT BUT DO NOT FALL. GO UP AND DOWN AGAIN AND PUNCH THE OTHER TWO ROCKS. GO BACK AND DOWN ONCE MORE AND YOU WILL FACE A ROW OF FOUR ROCKS. SMASH THE FIRST ROCK AND SMASH THE THREE REMAINING ROCKS. GO DOWN A FLOOR. YOU HAVE ANOTHER ROW OF FOUR ROCKS. PUNCH THE FIRST ROCK BUT DO NOT FALL. GO UP AND DOWN AGAIN. SMASH THE SECOND ROCK AND PUNCH THE OTHER TWO ROCKS. GO DOWN ANOTHER FLOOR. YOU WILL FACE A ROCK WHICH IS OVER THE WATER. PUNCH IT TWICE BUT BE CAREFUL FOR NOT FALLING INTO THE WATER. NOW YOU HAVE A DIAGONAL OF THREE ROCKS AND A ROW OF TWO ROCKS AT THE LEFT LOWER CORNER OF THE SCREEN. SMASH THE TWO FIRST ROCKS OF THE DIAGONAL AND PUNCH THE THIRD ONE WHICH WILL FALL AND FORM A THREE ROCKS ROW WITH THE REMAINING ROCKS IN THE SCREEN. TO FINISH, SMASH ALL THREE ROCKS. THE FIRST ONE THAT YOU SMASH HIDES THE FIRE BALL. USE IT AT YOUR PLEASURE. I ADVISE YOU TO ACCESS THE ARROW ↓ AND GO TO **QUE SERA**. ALTERNATIVELY, YOU CAN GET THE ← ARROW, WHICH WILL TAKE YOU TO **FIRE**.

QUE SERA



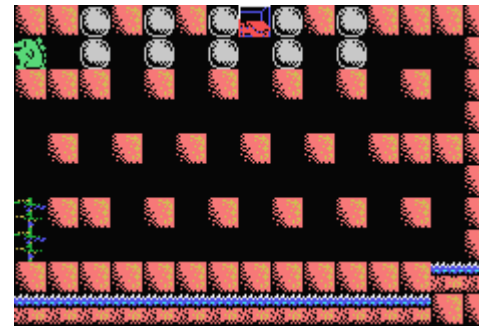
QUICKLY RUN TO THE RIGHT WHEN THE GAME STARTS, SO AS TO AVOID THE DINOSSAURS THAT WILL EXIT THE STAIRS. GO UP AND SMASH THE UNIQUE ROCK OF THE SCREEN. THE ROCK HIDES A HEART. PUNCH IT TO INCREASE YOUR LIFE SINCE YOU WILL HAVE TO PASS AGAIN BY THE STAIRS TO ACCESS THE ARROW ←, WHICH WILL LEAD YOU TO - & =.

- & =



WALT TO THE LEFT AND SMASH THE THREE ROCKS IN A ROW. GO DOWN AND SMASH THE OTHER THREE ROCKS IN A ROW. GO DOWN AND SMASH THE FIRST TWO ROCKS AND PUNCH THE THIRD ONE UNTIL IT FALLS DOWN. BEFORE THIS, WAIT FOR THE BLUE DINOSAUR TO FALL IN THE WATER. THIS WILL MAKE YOUR LIFE EASIER. FALL DOWN AFTER THE ROCK AND SMASH IT. GO TO THE LEFT AND UP AND TO THE RIGHT UNTIL YOU ENTER THE ARROW ←. YOU WILL BE DIRECTED TO **HELL**.

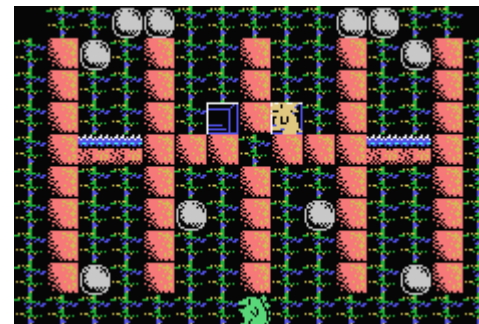
HELL



THIS IS A TUFF SCREEN. YOU HAVE TO BE QUICK AND LUCKY. LET'S START BY PUNCHING THE 5 COLUMNS OF TWO ROCKS DOWN A FLOOR. WHEN YOU PUNCH THE THIRD COLUMN OF ROCKS, MAKE SURE THAT YOU DO NOT KILL THE BLUE DINOSSAUR. THIS WILL GIVE YOU SOME EXTRA TIME TO FINISH THIS SCREEN. NOW GO DOWN AND PUNCH THE 5 COLUMNS AGAIN ONE FLOOR MORE. GO DOWN AGAIN AND PUNCH THE 5 COLUMNS ONCE MORE. GO BACK AND DOWN USING THE ROPE. START SMASHING ALL THE ROCKS. THE SECOND ROCK OF THE THIRD COLUMN TO BE

SMASHED HIDES A BOMB. PUNCH IT TO HAVE SOME EXTRA TIME FREE OF DINOSSAURS. TWO ARROWS WILL APPEAR. → LEADS YOU BACK TO **HELL**. TAKE ARROW ↑, WHICH WILL TAKE YOU TO **ODEON**.

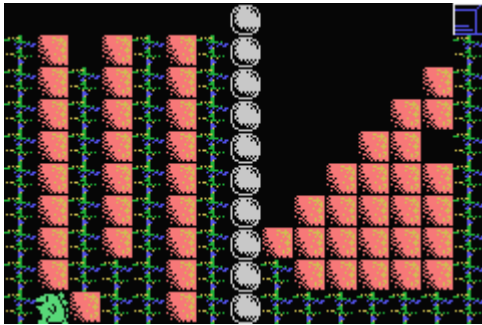
ODEON



FIRST OF ALL, LET'S SMASH THE FOUR ROCKS OF THE LOWER PORTION OF THE SCREEN. NOW, LET'S GO TO THE UPPER PORTION, RIGHT SIDE. SMASH THE FIRST ROCK OF THE TWO ROCKS ROW OF YOUR LEFT. IT HIDES A HEART TO INCREASE YOUR LIFE. PUNCH THE SECOND ROCK ONCE AND GET BACK AND DOWN TO SMASH THE THIRD ROCK OF THE RIGHT SIDE. GO BACK AND PUNCH THE SECOND ROCK UNTIL IT HITS THE TWO ROCKS ROW OF THE LEFT, FORMING A THREE ROCKS ROW. SMASH THE THREE ROCKS AND GET BACK A LITTLE, JUST TO SMASH THE LAST ROCK OF THE SCREEN. NOW,

TWO ARROWS WILL APPEAR. GET THE ARROW ← AND GO TO **DESTROYER**. OTHERWISE, IF YOU TAKE THE ARROW ↓, YOU WILL GET BACK TO **HELL**.

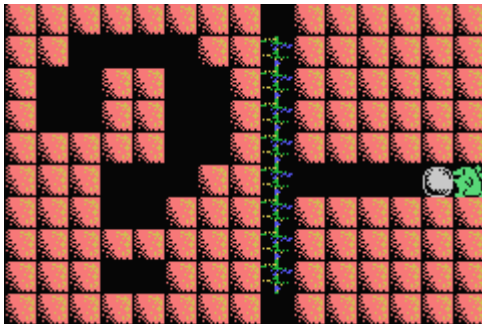
DESTROYER



THEM FALL DOWN, AVOIDING SOME DIPOSSAURS.

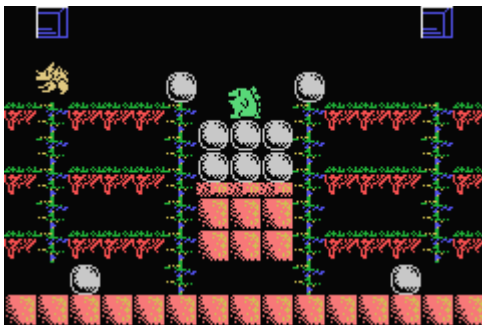
GO UP AND DOWN UNTIL YOU FACE THE BOTTOM OF THE 10 ROCKS COLUMN. START SMASHING THE ROCKS UNTIL IT REMAINS ONLY ONE ROCK. PUNCH IT TO THE RIGHT SIDE OF THE SCREEN AND SMASH IT. THIS ROCK HIDES A HEART WHICH WILL INCREASE YOUR LIFE. TWO ARROWS WILL APPEAR. THE ARROW ↓ WILL TAKE YOU TO **TOHO**. DO NOT TAKE THIS WAY, ENTER THE ARROW ←, WHICH TAKES YOU TO **PAC**. BUT BE CAREFUL TO AVOID THE DIPOSSAURS. IT WOULD BE WISER TO WAIT FOR THEM AT THE TOP OF THE BIG ROPE NEXT TO WHERE THE COLUMN OF ROCKS WAS AND

PAC



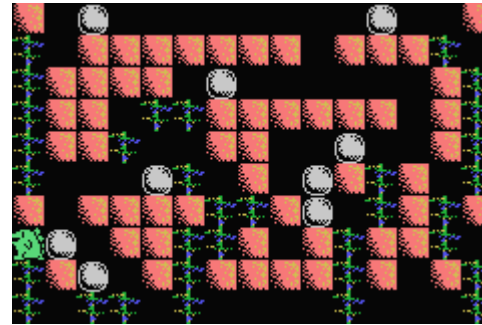
EASY SCREEN. PUNCH THE ROCK TO THE LEFT AND SMASH IT. TWO ARROWS WILL APPEAR, ONE AT EACH END OF THE ROPE. GO UP AND ENTER THE ARROW ↑, LEADING YOU TO **DOWN**. ARROW ↓ TAKES YOU TO **X-WING**.

DOWN



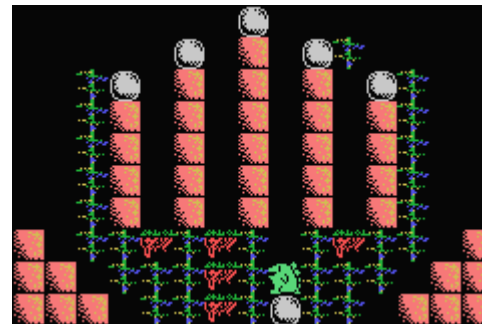
QUICKLY PUNCH THE TWO TOP ROCKS. THE ONE OF THE RIGHT AND THE OTHER OF THE LEFT. MAKE YOUR WAY THROUGH THE ROPE OF THE RIGHT. GO DOWN A LITTLE BIT, JUST TO FACE THE TOP ROW OF THREE ROCKS. SMASH THE FIRST AND SECOND ROCKS AND PUNCH THE THIRD ONE UNTIL IT FALLS DOWN. GO BACK AND DOWN A LITTLE BIT MORE, JUST TO FACE THE REMAINING ROW OF THREE ROCKS. SMASH THE TWO FIRST ROCKS. GO BACK AND UP USING THE ROPE OF THE LEFT AND SMASH THE ROCKING WHICH IS INTO THE WATER. GO DOWN AND FINALLY TO THE RIGHT. PUNCH THE FIRST ROCK UNTIL IT HITS THE SECOND ONE AND SMASH IT. PUNCH THE SECOND ROCK TO THE RIGHT SIDE OF THE SCREEN AND SMASH IT. NOW, IN ORDER TO FINISH THE SCREEN, GO TO THE LEFT AND PUNCH AND SMASH THE COLUMN OF TWO ROCKS WHICH YOU HAVE FORMED. THE SECOND ONE HIDES THE FIRE BALL. GET IT AND USE IT AT YOUR WISH. WHEN THE FIRE BALLS FINISH, PUNCH AND SMASH THE LAST ROCK OF THE SCREEN. TWO ARROWS WILL APPEAR AGAIN. THE ARROW → WILL TAKE YOU TO **CHECKER**. BUT YOU WILL NOT TAKE THIS WAY. INSTEAD, ENTER ARROW ← AND GO TO **OPTION**.

OPTION



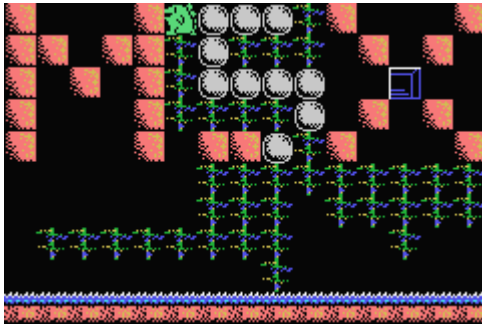
THE ROCK OF YOUR LEFT AGAIN AND FACE THE COLUMN OF TWO ROCKS YOU HAVE FORMED. PUNCH THE FIRST ONE AND SMASH THE SECOND. NOW CONTINUE PUNCHING THE FIRST ROCK UNTIL IT FALLS DOWN. GET BACK AND PUNCH THE ROCK YOU HAVE PASSED BY UNTIL IT FALLS DOWN IN THE HOLE OF THE LEFT. GO UP THROUGH THE ROPE OF THE LEFT AND SMASH THE ROCK OF YOUR RIGHT. GET DOWN TO THE LOWER FLOOR AGAIN. GO TO THE LEFT AND SMASH THE THREE ROCKS YOU HAVE THERE. NOW, GET THE FIFTH ROPE TO ACCESS THE FOUR REMAINING ROCKS. BYPASS THE COLUMN OF TWO ROCKS OF YOUR LEFT AND GO UP. SMASH THE ROCK OF YOUR RIGHT AND PUNCH THE ROCK OF THE LEFT ONCE. YOU WILL FORM A COLUMN OF THREE ROCKS. NOW GO DOWN ONE FLOOR AND START SMASHING THE COLUMN OF ROCKS. IF YOU HAVE MADE EVERYTHING RIGHT, YOU WILL AUTOMATICALLY TAKE THE ARROW ↑, WHICH IS THE RIGHT ONE, TAKING YOU TO **FLOWER**. ARROW → WILL TAKE YOU BACK TO **DOWN**. ARROW ↓ TAKES YOU TO **PROGRAMMER**. ARROW ← IS NOT ACCESSIBLE. I DO NOT EVEN KNOW WHY THIS ARROW APPEARS. DON'T MATTER, LET'S CONTINUE THE GAME.

FLOWER



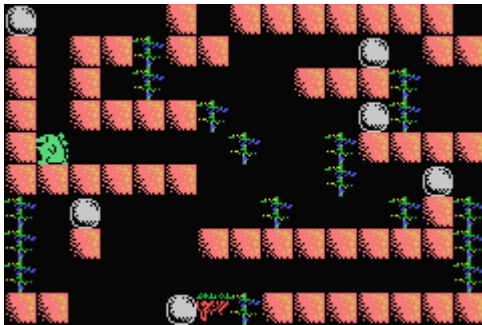
GO TO THE RIGHT AND UP THROUGH THE ROPE OF THE RIGHT. PUNCH THE TOP ROCK. GO DOWN AND LEFT. TAKE THE ROPE OF THE LEFT UP. PUNCH THE TOP ROCK OF YOUR RIGHT. GO DOWN ONE FLOOR AND PUNCH THE ROCK OF YOUR RIGHT. GO DOWN AND PUNCH THE ROCK THAT HAS JUST FELT TO THE RIGHT UNTIL IT GETS OUT OF YOUR WAY. NOW, GET THE ROPE OF THE RIGHT AGAIN UP AND PUNCH THE TOP ROCK. GO DOWN ONE FLOOR AND PUNCH THE ROCK OF YOUR LEFT. GO DOWN AND PUNCH THE ROCK THAT JUST FELT UNTIL YOU SMASH IT. GO TO THE LEFT AND PUNCH THE ROCK OF YOUR LEFT UNTIL YOU SMASH IT. POSITION YOURSELF IN THE MIDDLE OF THE TWO COLUMNS OF TWO ROCKS. PUNCH THE FIRST AND SMASH THE SECOND OF EACH COLUMN. PUNCH AND SMASH THE TWO REMAINING ROCKS, EACH TO A SIDE OF THE SCREEN. THE ONE OF THE RIGHT HIDES AN HOUR-GLASS. ARROW ↑ WILL TAKE YOU TO **IHSIN IICSA**. THAT IS THE RIGHT WAY. IF YOU ENTER ARROW →, YOU WILL BE DIRECTED TO **BABEL**.

IHSIN IICSA



PUNCH AND SMASH THE THREE ROCKS OF YOUR RIGHT. GO DOWN AND PUNCH THE SOLE ROCK TO THE RIGHT UNTIL IT FALLS. NOW, GO DOWN AND SMASH THE FOUR ROCKS OF YOUR RIGHT. THE LAST ONE HIDES AN HOUR-GLASS. HIT IT AND QUICKLY SMASH THE THREE REMAINING ROCKS. THE ARROW → WILL APPEAR IN THE LEFT SIDE OF THE SCREEN. IT WILL TAKE YOU TO **PUZZLE** - THE MOST DIFFICULT SCREEN OF THE GAME.

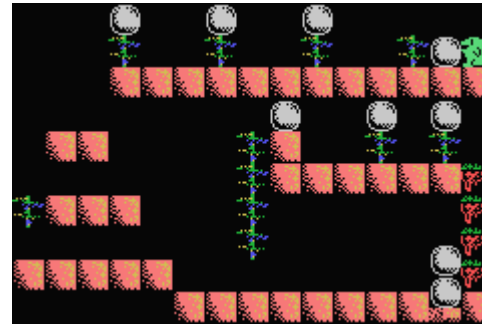
PUZZLE



LET'S START THE HARDER SCREEN OF THE GAME. THE NAME SAYS IT ALL - PUZZLE. GO DOWN AND TO THE RIGHT, UNTIL YOU REACH THE ROPE OF THE RIGHT. GO UP AND PUNCH THE ROCK OF YOUR LEFT SIX TIMES. NOW, GO UP THE LITTLE ROPE AND PASS OVER THE ROCK AND PUNCH IT TWICE TO THE RIGHT. GO UP THE LITTLE ROPE AGAIN AND ACCESS THE OTHER FLOOR THROUGH THE ROPE OF YOUR RIGHT. NOW, PUNCH TWICE THE ROCK OF YOUR RIGHT, AND GO UP THROUGH THE ROPE. PUNCH THE ROCK OF YOUR LEFT THREE TIMES UNTIL IT FELLS DOWN OVER THE LITTLE ROPE. FALL DOWN ALSO

AFTER THE ROCK AND UP USING THE TWO LITTLE ROPES AND THE UPPER ROPE. WITHOUT FALLING, SMASH THE FIRST ROCK OF THE SCREEN - THE ONE OF THE TOP LEFT CORNER OF THE SCREEN. GO BACK AND POSITION YOURSELF OVER THE ROCK WHICH IS OVER THE FLOOR AND AT THE RIGHT SIDE OF THE ROPE WHICH IS OVER THE LITTLE ROPE. PUNCH THIS ROCK THREE TIMES TO THE LEFT UNTIL IT FELLS DOWN TO THE LOWER FLOOR. NOW GO TO THE RIGHT, DOWN USING THE ROPE OF THE RIGHT AND PUNCH THE ROCK OF YOUR LEFT ONCE. IT WILL FALL IN FRONT OF THE ROCK THAT WAS INITIALLY THERE. GO TO THE RIGHT AGAIN AND UP THROUGH THE ROPE. GO TO THE LEFT AND PUNCH THE ROCK TWICE. USE THE LITTLE ROPE, WALK OVER THE ROCK AND PUNCH IT TWICE FROM THE LEFT TO THE RIGHT. USE THE LITTLE ROPE AGAIN AND ACCESS THE OTHER FLOOR. PUNCH THE ROCK FROM THE RIGHT TO THE LEFT UNTIL IT FALLS DOWN OVER THE OTHER ROCK, FORMING A COLUMN. GO DOWN THROUGH THE ROPE AND FACE THE RIGHT SIDE OF THE UPPER ROCK OF THE COLUMN. PUNCH IT TO THE LEFT UNTIL IT FALLS DOWN. GO BACK TO THE RIGHT AND DOWN. GO TO THE LEFT AND PUNCH THE ROCK TWICE. IT WILL FALL IN FRONT OF THE OTHER TWO ROCKS, FORMING A THREE ROCKS ROW. GO BACK TO THE RIGHT AND UP USING THE ROPE OF THE RIGHT. GO TO THE LEFT AND PUNCH THE REMAINING ROCK TO THE LEFT UNTIL IT FALLS DOWN. GO BACK TO THE RIGHT AND DOWN. GO TO THE LEFT AND PUNCH THE ROCK UNTIL IT FALLS, CREATING A PASSAGE TO THE LEFT SIDE OF THE SCREEN. GO UP THROUGH THE ROPE OF THE LEFT AND PUNCH THE ROCK OF YOUR RIGHT. IT WILL FALL DOWN. GO DOWN AND PUNCH IT UNTIL IT FALLS THROUGH THE MUDDY FLOOR. NOW, GO DOWN THROUGH THE LITTLE ROPE AT THE RIGHT SIDE OF THE FIVE ROCKS ROW AND SMASH ALL ROCKS. ENTER THE ARROW → THAT APPEARS AND GO TO **PERFORMANCE**.

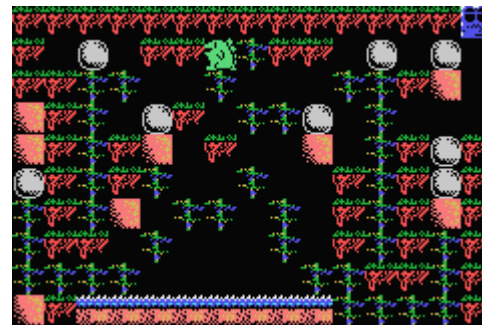
PERFORMANCE



PUNCH THE ROCK OF YOUR LEFT TWICE. GO UP USING THE LITTLE ROPE AND, WITHOUT FALLING, PUNCH THE ROCK OVER THE NEXT LITTLE ROPE. GO DOWN AND PUNCH AND SMASH THE FIRST ROCK. GO UP THE LITTLE ROPE AND WALK OVER THE ROCK AND PUNCH THE ROCK OVER THE NEXT LITTLE ROPE. REPEAT THIS PROCEDURE ONCE MORE. THE ROCK WILL FALL DOWN TO THE FLOOR BENEATH THE ONE YOU ARE. NOW PUNCH THE ROCK OF YOUR LEFT UNTIL IT FALLS OVER THE PREVIOUS ONE. NOW GO DOWN AND FACE THE LEFT SIDE OF THE TWO ROCKS COLUMN. PUNCH BOTH OF THEM, GO

DOWN AND PUNCH BOTH OF THEM AGAIN. GO DOWN AND PUNCH BOTH ROCKS AGAIN UNTIL THEY FALL ONE IN FRONT OF THE OTHER. ACCESS THE BIG ROPE AND GO UP. PUNCH THE ROCK OF YOUR RIGHT. WALK OVER IT AND PUNCH THE ROCK OVER THE LITTLE ROPE. WALK OVER THIS ROCK AND PUNCH THE OTHER ROCK WHICH WILL FALL DOWN THROUGH THE FOUR PIECES OF MUDDY FLOOR. NOW, SMASH THE TWO ROCKS THAT REMAIN ON YOUR FLOOR. NEXT, FALL DOWN THROUGH THE PASSAGE OF THE RIGHT. TO YOUR LEFT, YOU HAVE A COLUMN OF TWO ROCKS. PUNCH TWICE THE UPPER ONE TO THE LEFT. NOW, SMASH THE TWO ROCKS OF YOUR RIGHT, WITHOUT FALLING INTO THE WATER. NOW, PUNCH AND SMASH THE THREE ROCKS OF YOUR LEFT. THE LAST ROCK HIDES A KEY. PUNCH IT AND THE ARROW ↓ WILL APPEAR. ENTER IT AND YOU WILL BE TAKEN TO **JEMINI**.

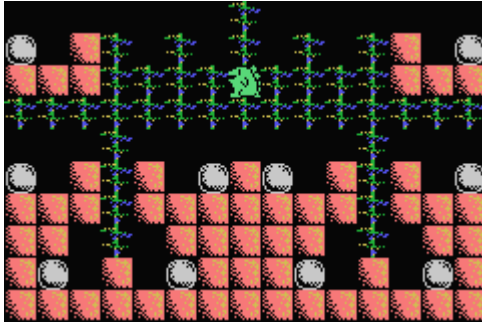
JEMINI



USE THE ROPES AND GO TO THE LEFT. PUNCH THE TOP LEFT ROCK TO THE LEFT. IT WILL FALL THROUGH THE SIX PORTIONS OF MUDDY FLOOR. NOW, GO TO THE RIGHT AND PUNCH THE TOP RIGHT ROCK (NOT THE RIGHTEST). IT WILL FALL THROUGH SIX PORTIONS OF MUDDY FLOOR. FROM WHERE YOU ARE, PUNCH THE TOP RIGHTEST ROCK TO THE RIGHT. IT WILL ALSO FALL THROUGH SIX PORTIONS OF MUDDY FLOOR. BELOW THE ROCK THAT HAS JUST FALL, THERE IS A COLUMN OF TWO ROCKS. GO DOWN THE BIG ROPE AND PUNCH BOTH OF THEM TO THE RIGHT. THEY WILL FORM A THREE

ROCKS COLUMN AT THE RIGHT PORTION OF THE SCREEN. ** GO BACK UP AND TO THE LEFT AND PUNCH THE MIDDLE RIGHT ROCK TO THE RIGHT. IT WILL FALL THROUGH THREE PORTIONS OF MUDDY FLOOR. GO TO THE LEFT AND SMASH THE MIDDLE LEFT ROCK. GO DOWN AND SMASH THE LEFTMOST ROCK. KEEP GOING DOWN AND SMASH THE LEFT LOWER ROCK. NOW, ACCESS THE RIGHT PORTION OF THE SCREEN, GOING THROUGH THE LITTLE ROPES IN THE LOWER PORTION OF THE SCREEN. THEN GO UP AND FACE THE ROCK WHICH IS NEAR THE WATER. PUNCH IT TO THE RIGHT. IT WILL FALL THROUGH THE MUDDY FLOOR. IT WILL FORM A TWO ROCKS ROW. NOW START SMASHING ALL ROCKS REMAINING IN THE SCREEN - THEY ARE IN A TOTAL OF FIVE. AN ARROW → WILL APPEAR. TAKE IT AND GO TO THE **END SCREEN**.

END SCREEN



THIS IS THE FINAL LEVEL. JUST GO ALL WAY DOWN THROUGH THE BIG ROPE OF THE LEFT. THEN, SMASH THE ROCK OF YOUR LEFT. THEN, SMASH THE ROCK OF YOUR RIGHT. THERE YOU WILL FIND MINIRA.
GAME IS FINISHED. CONGRATULATIONS.
YOU MADE IT!!!!



V - GREETINGS

THANKS TO ALBERT BEEVENDORP AND PATRICK VAN ARKEL (A.K.A. VAMPIER) FOR MAKING THOSE FANTASTIC BLUEMSX CHEATS.

THANKS TO BENOIT DELVAUX FOR HOSTING OUR SITE.

© **MSX SOLUTIONS** – 2005
FABIO ALBERGARIA DIAS